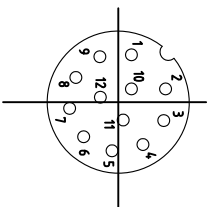
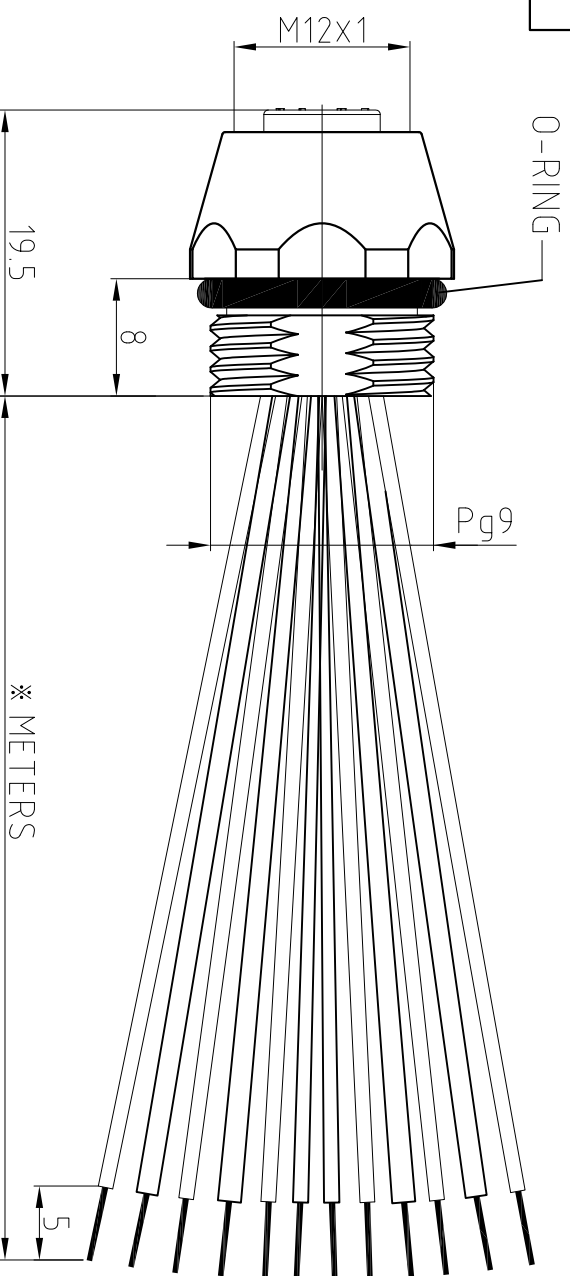
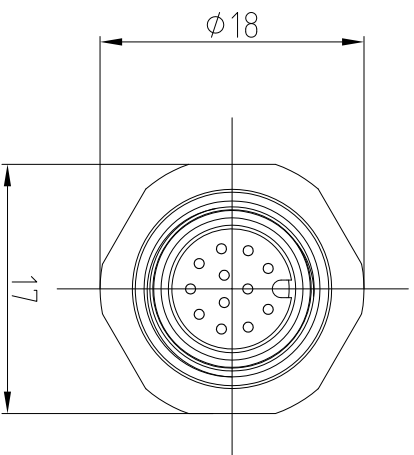


SUGGESTED PANEL CUT OUT



- 



SPECIFICATIONS	
CONTACT CARRIER MATERIAL/COLOR	TPU/BLACK
CONTACT/PLATING	BRASS/GOLD
HOUSING MATERIAL/PLATING	BRASS/NICKEL
O-RING MATERIAL	FKM/NBR
OPERATING CURRENT	2 A
OPERATING VOLTAGE	60 V
CONDUCTOR INSULATION MATERIAL	PVC
NUMBER OF CONDUCTORS (AWG)	12 x 24, AWG
OPERATING TEMPERATURE	-20°C — +85°C
PROTECTION CLASS	IEC IP67

CABLE LENGTH	TOLERANCE
ALL LENGTHS	+4% (OR 50mm) OF LENGTH -0% (OR 0mm) OF LENGTH WHICHEVER IS GREATER
STRIP LENGTH	TOLERANCE
0 - 7mm	± 1.0mm
8 - 29mm	± 1.5mm
30 - 49mm	± 2.0mm
50 - 69mm	± 3.0mm
70 - 100mm	± 4.0mm
over 100mm	± 5.0mm

UNIT OF MEASUREMENT  
MILLIMETER

Tianjin Geneuo Technology Co.,Ltd



Approved: Date:	Date: 2018.4.27
--------------------	--------------------

Description:

code

Scale: 1:1

Checked: WY
-------------

Date: 2018.5.3

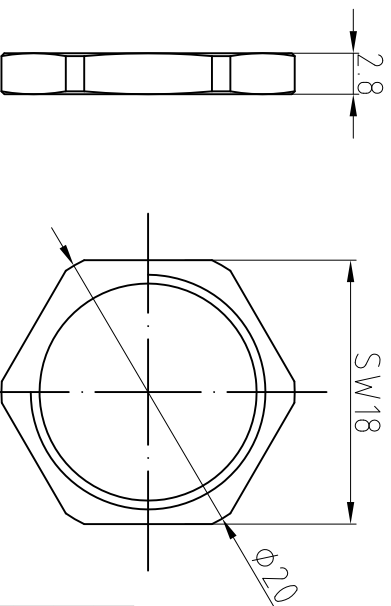
Designed: JXH

Date: 2018.4.27

3RD Angle  
Projection

www.gsee-tech.cn  
www.gsee-tech.com

SOURCE DRAWING-FOR REFERENCE ONLY

REV  
A

		DATE OF REVIEW		BY		CHECKED		DATE	
REV	COUNT	DESCRIPTION OF REVISIONS		BY	CHECKED	DATE			